

## Home Page



The screenshot shows the website's navigation menu with options: Texts, Maps, Images (highlighted), Finding Aids, Census, Chronology, and Videos. Below the menu is the title "Historic Pittsburgh Image Collections" and a navigation bar with links: Explore | Search | Collections | Copyright | Help | Contact Us.

The main content area features a promotional message: "Come visit our NEW site @ [www.historicpittsburgh.org](http://www.historicpittsburgh.org)! Give it a try and let us know what you think!"

On the left is a photograph of a man, Adam Hart, with a caption: "Adam Hart, ca. 1862-1867 (detail) Lyon Shorb & Company Collection Historical Society of Western Pennsylvania".

On the right is a paragraph of text: "The Historic Pittsburgh Image Collections site provides access to over 32,750 visual images from 73 collections held by the Archives Service Center at the University of Pittsburgh, Carnegie Museum of Art, Chatham University Archives, the Library & Archives at the Heinz History Center, Monroeville Historical Society, Northland Public Library, Oakmont Carnegie Library, Pitcairn Historical Society, Pittsburgh History & Landmarks Foundation, Point Park University, Rodef Shalom Congregation, Pittsburgh Symphony Orchestra, Carnegie Museum of Natural History Archives, and the Historical Society of Upper St. Clair. To learn more about the original grant project (2001-2004), please review [About the Image Collections](#)." Below this is another paragraph: "The wide range of photographs offer a compelling and comprehensive look at how Pittsburghers lived and worked in the nineteenth and twentieth centuries. Selected from dozens of photographic collections, the images visually record the cultural, educational, and social development of the greater Pittsburgh region, as well as its urban structures, regional landscapes, and multifarious transportation methods. The images portray Pittsburgh's diverse workforce, industries, public schools, ethnic communities, and civic renaissance of the mid-1940s up until the early 2000s."

At the bottom is a search box with two options: "Explore the Collections" and "Search the Collections". The "Search the Collections" option is selected. To the right of the search box is a "Quick Search:" section with a text input field, a "search" button, and a link to "Advanced Search".

## Logo



## URL

<http://digital.library.pitt.edu/images/pittsburgh/explore.html>

## Subject

University of Pittsburgh - Photographs collections  
Images, Photographic

## Accessibility

Free

## Language

English

## Publisher

University of Pittsburgh's University Library System

## Brief History

Subject to research

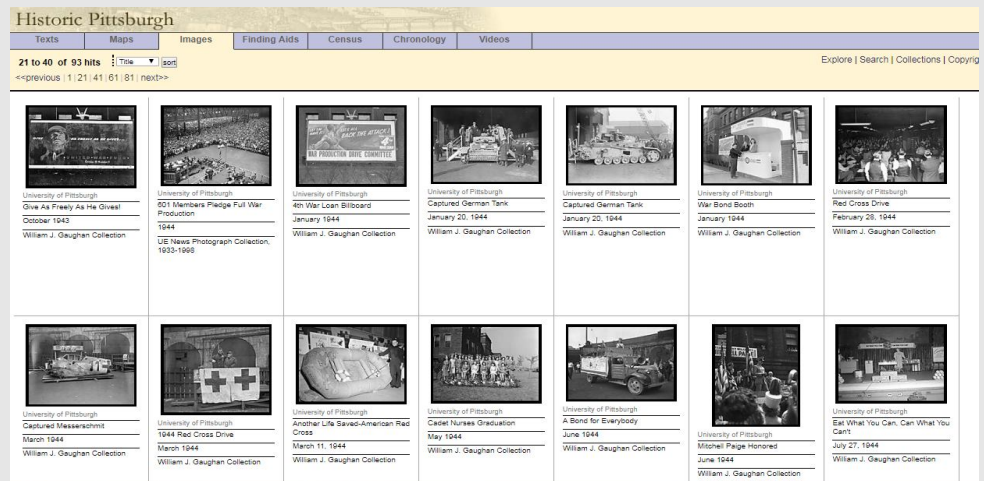
## Scope and Coverage

The wide range of photographs offer a compelling and comprehensive look at how Pittsburghers lived and worked in the nineteenth and twentieth centuries.

## Kind of Information

The Historic Pittsburgh Image Collections site provides access to over 32,750 visual images from 73 collections held by the Archives Service Center at the University of Pittsburgh, Carnegie Museum of Art, Chatham University Archives, the Library & Archives at the Heinz History Center, Monroeville Historical Society, Northland Public Library, Oakmont Carnegie Library, Pitcairn Historical Society, Pittsburgh History & Landmarks Foundation, Point Park University, Pittsburgh Symphony Orchestra, Carnegie Museum of Natural History Archives, and the Historical Society of Upper St. Clair.

The images from this collection visually record the cultural, educational, and social development of the greater Pittsburgh region, as well as its urban structures, regional landscapes, and multifarious transportation methods. The images portray Pittsburgh's diverse workforce, industries, public schools, ethnic communities, and civic renaissance of the mid-1940s up until the early 2000s.



Example of Wartime images from the collections

## Special Features

- ❖ Users can explore the diverse image collections in various ways. Such as, Explore by Time, Explore by Location or Explore by Collections.

Example by Time,

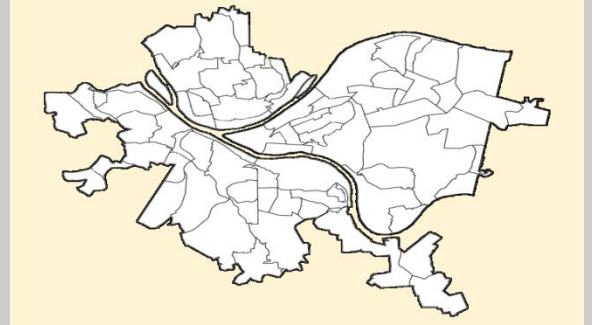
**1939-1945: World War II**

World War II brought new life to industrial centers like Pittsburgh. Steel mills and factories expanded in size and scope to accommodate the war effort. For public relations campaigns and accountability to government war offices, corporate photographers documented home front mobilization, including images of women filling factory jobs left vacant by men serving in the armed forces. In their homes and neighborhoods, soldiers became local heroes and were proudly photographed by friends, family, and portrait artists.

- [Wartime images from the collections](#)

Users can also explore Pittsburgh Images by Location: Click on a place within

the Pittsburgh city map below to perform a location-specific search.



❖ Quick and advanced search facilities are also available.

 Search the Collections      **Quick Search:**  
   
[Advanced Search](#)

**Arrangement Pattern**      The Historic Pittsburgh Image Collections provide online access to over 32,750 images from 73 photographic collections. These collections are arranged by a list.

As for example,

- [Archives Service Center, University of Pittsburgh \(34\)](#)
- [Carnegie Museum of Art \(2\)](#)
- [Carnegie Museum of Natural History Archives \(1\)](#)
- [Chatham University Archives \(1\)](#)
- [Historical Society of Upper St. Clair \(1\)](#)
- [Library & Archives at the Senator John Heinz History Center \(26\)](#)
- [Monroeville Historical Society \(1\)](#)
- [Northland Public Library \(1\)](#)
- [Oakmont Carnegie Library \(1\)](#)
- [Pitcairn Historical Society \(1\)](#)
- [Pittsburgh History & Landmarks Foundation \(1\)](#)
- [Pittsburgh Symphony Orchestra Archives \(1\)](#)
- [Point Park University Archives \(1\)](#)
- [Rodef Shalom Congregation \(1\)](#)

**Remarks**      The University of Pittsburgh provides access to the digital materials on the Historic Pittsburgh website for educational and research purposes only. Historic Pittsburgh Image Collection is a comprehensive collection of local resources that supports personal and scholarly research of the western Pennsylvania area.

**Comparable Tools**      ➤ North Lincolnshire Museum Service Image Archive ( <http://www.northlincsmuseumimagearchive.org.uk/> )  
➤ Photo Archive of The Durham Museum ( <https://durhammuseum.org/exhibits-collections/photo-archive/> )

**Date of Access**      July 18, 2017