

Home Page

Smithsonian Smithsonian Institution Research Information System **SIRIS**
Collection Highlights

Image Gallery
The Image Gallery contains a sampling of visual records that are part of the Collections Search Center. The Image Gallery includes over 2 millions electronic images, videos from several archival repositories and museums at the Smithsonian.

Image by Physical Formats:

- Photographs
- Postcards
- Postage Stamps
- Paintings
- Sculptures
- Crafts & Folk Art
- Jewelry
- Aircraft
- Scientific Specimens

Mandala, Name: Wilson, Jay,
Used: United States: Alabama,
Date: 1812

Logo**URL**

<http://sirismm.si.edu/siris/sirisimagegallery.htm>

Subject

Smithsonian Institution Research Information System - Photograph collections
United States – Photograph collections – Archives
United States – Images

Accessibility

Free

Language

English

Publisher

Smithsonian Institution Research Information System

Brief History

The Institution was founded in 1846 with funds from the Englishman James Smithson (1765–1829) according to his wishes “under the name of the Smithsonian Institution, an establishment for the increase and diffusion of knowledge.

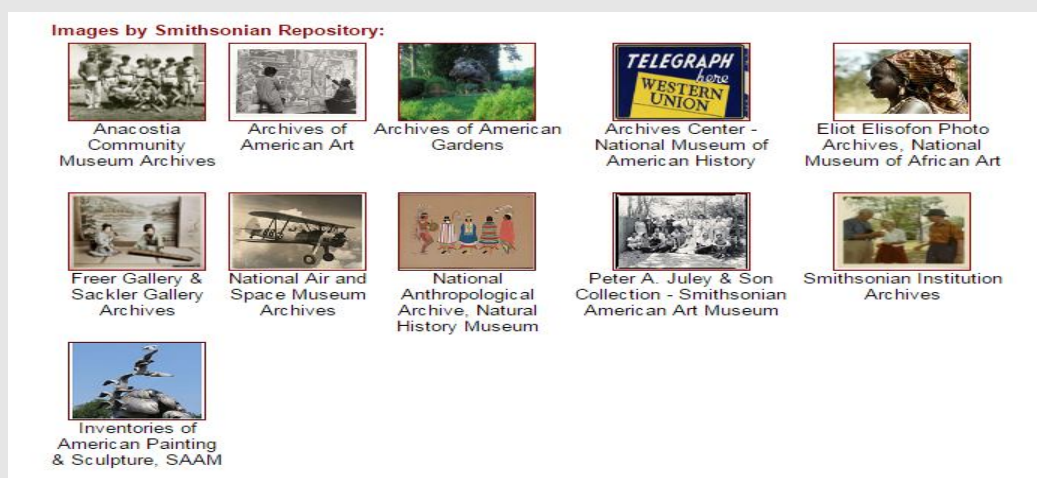
Scope and Coverage

Smithsonian Institution Research Information System's image gallery covers photographs, art collections from archival repositories and museums at the Smithsonian.

Kind of Information

The Image Gallery contains a sampling of visual records that are part of the Collections Search Center. The Image Gallery includes over 2 millions electronic images, videos from several archival repositories and museums at the Smithsonian.

These repositories are listed in the home page of image gallery, users can select any of these collection to see the images.



Descriptions of these repositories are provided with every collection. Few of these are described here as for example, these are -



The Archives of American Gardens, part of the Smithsonian Gardens, includes a collection of approximately 60,000 photographic images and records that document historic and contemporary gardens throughout the United States. The images, which depict views from colonial times to the present, include a considerable range of garden features such as furniture and ornamentation, as well as all manner of design styles.



This selection represents a selection of archival collections that have been digitized for their images from The National Anthropological Archives at National Museum of Natural History.




Selections from National Air and Space Museum Archives

Archives, Manuscripts and Photographic Catalog

The National Air and Space Museum Archives acquires and preserves for the public a wide range of visual and textual materials that document the history of air and space flight. Included in the 11,000 cubic feet of collection material are over 1.7 million photographs, of which only a small subset is showcased here. Additional images will be uploaded on a continual basis.

Special Features

- ❖ The Archives of American Gardens images can be searchable by these options. Map showing places of United States where user can find images of different places from United States.



Search images by State or foreign country via an interactive map
Garden images arranged by geographic location.



Search images by Subjects
Garden images arranged by
Garden Features
Garden Furniture
Garden Structures
Garden Styles



Search images from
Smithsonian Collection of
Garden Furnishings and
Horticultural Artifacts

Reset Map









Reset Map

Hide Continents. Hide Countries. Hide States/Provinces. Hide Cities. Hide Points.

- ❖ Users can search more resources in Smithsonian Collections Search Center. Here images are categorically arranged.

Search Highlights

 <p>Asian Americans blogs</p>	 <p>Asian American Artists</p>	 <p>Asian American Videos</p>
 <p>Japanese Art</p>	 <p>Chinese Art</p>	 <p>Korean Art</p>

Arrangement Pattern

All the images are arranged under three broad categories, i.e. Image by Physical Formats, Images by Culture Groups and Images by Smithsonian Repository.

As for example,



Remarks

The Smithsonian Institution Research Information System (SIRIS) is an interactive, integrated system applying established national standards to manage, describe, and provide access to research resources held primarily by the Institution's libraries, archives, and research units in support of the Institution's mission. SIRIS supports the Smithsonian research community by providing a gateway to and from other Institution information resources and to external information resources.

Comparable Tools

- Digital Collections at CALTECH : The Image Archive (<http://archives-dc.library.caltech.edu/>)
- Photo Archives of United States Holocaust Memorial Museum (<http://digitalassets.ushmm.org/photoarchives/>)

Date of Access

May 12, 2017